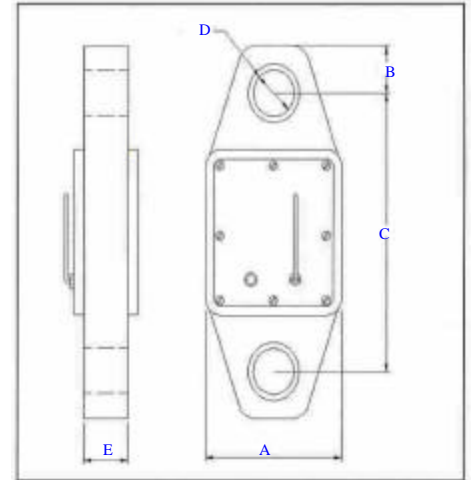


TDM TELEMETRY LOAD LINK

KEY FEATURES OF T.D.M.

- Wireless Remote Readout
- I.P.66 Protection Rating
- High Resolution With 7-1/2" Digital Display
- Multi Unit Operation In One Area
- Link Switch On/Off From Hand Held
- Four Switch Able Units Lbs/Tons Or Kgs/Tonnes
- Operates On AA Alkaline Batteries
- Local And Remote Low Battery Warning

LOAD CAPACITY (TONNE)	A		B		C		D		E		SHACKLE SIZE (TONNE)	APROX WEIGHT (LBS)
	MM	INCH	MM	INCH	MM	INCH	MM	INCH	MM	INCH		
5	130	5.118	32	1.279	243	9.567	27	1.064	32	1.261	6.5	6.61
12.5	130	5.122	44	1.732	256	10.086	40	1.576	50	1.970	13.5	9.9
25	136	5.122	70	2.758	290	11.426	55	2.167	61	2.421	25	14.3
35	138	5.433	65	2.561	310	12.214	62	2.443	70	2.758	35	24.25
50	170	6.698	88	3.467	304	11.978	75	2.955	85	3.349	55	35.27
75	180	7.092	98	3.861	304	11.978	85	3.349	100	3.940	85	37.47
100	188	7.407	100	3.940	404	15.918	100	3.940	120	4.728	120	61.72
150	248	9.771	130	5.122	420	16.548	120	4.728	130	5.122	150	79.36
200	292	11.496	174	6.850	412	16.220	130	5.118	150	5.906	200	TBA



Sizes shown are approximations, please confirm critical dimensions at time of order

Additional JCM Load Measuring Devices



Cabled Load Link



Cabled and Wireless Load Shackles



New Visilink